



Fig. 1. ???.

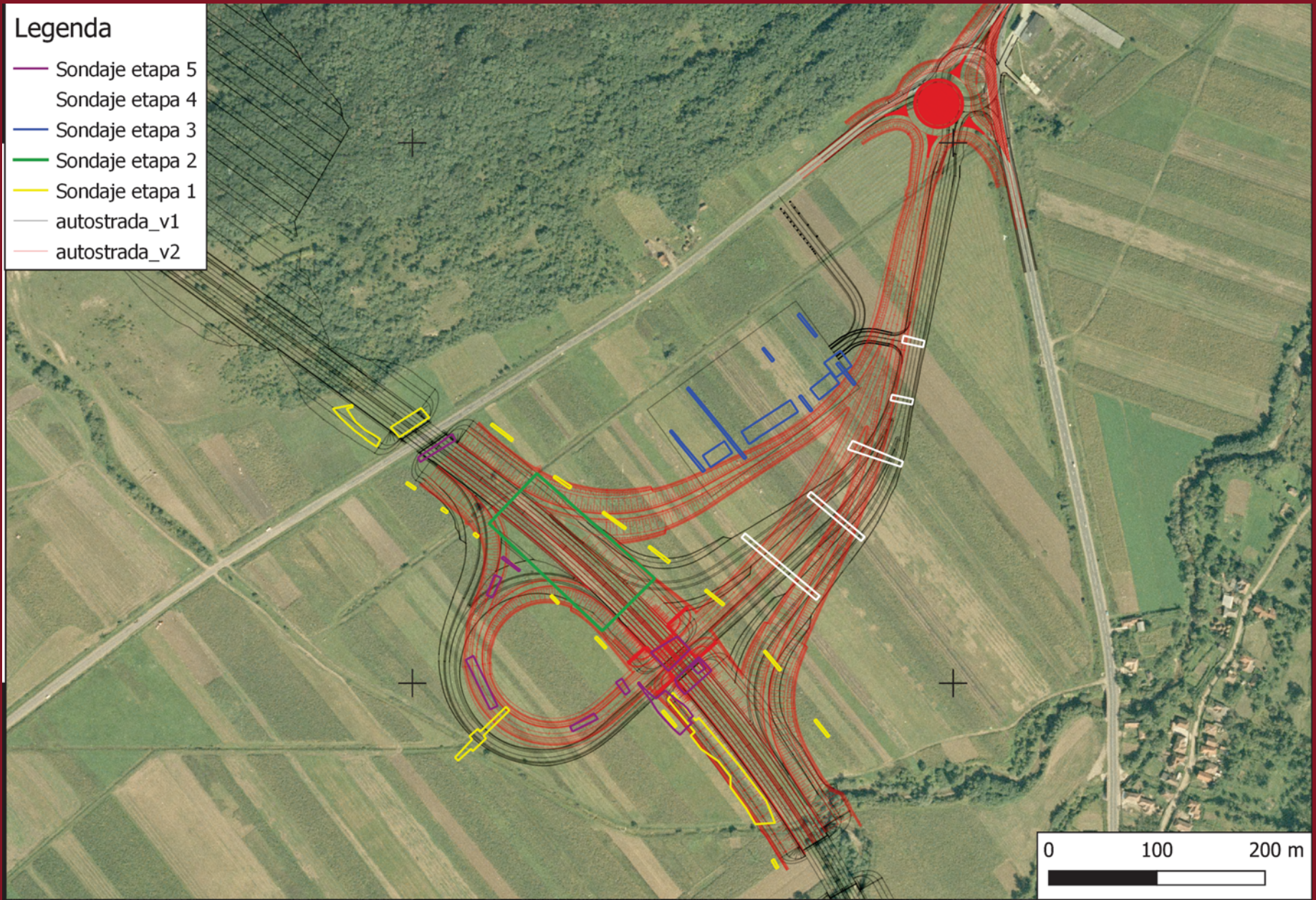


Fig. 2. ???.



Fig. 3. ???.

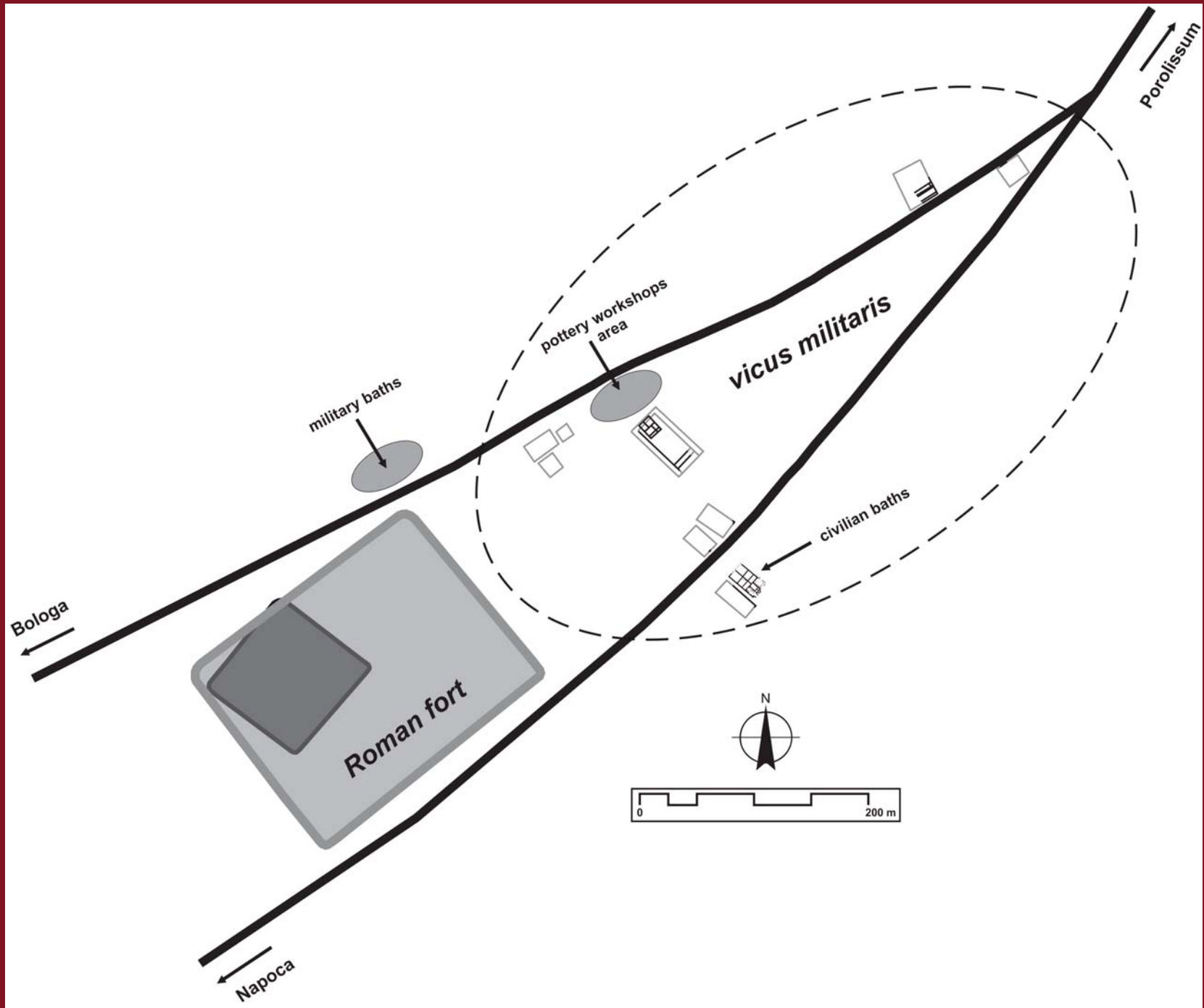
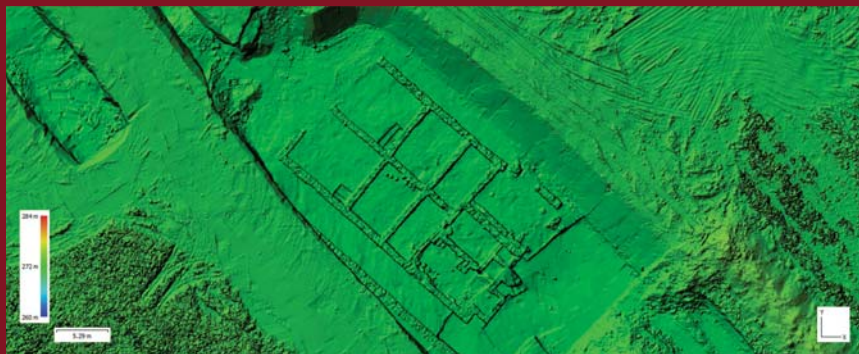
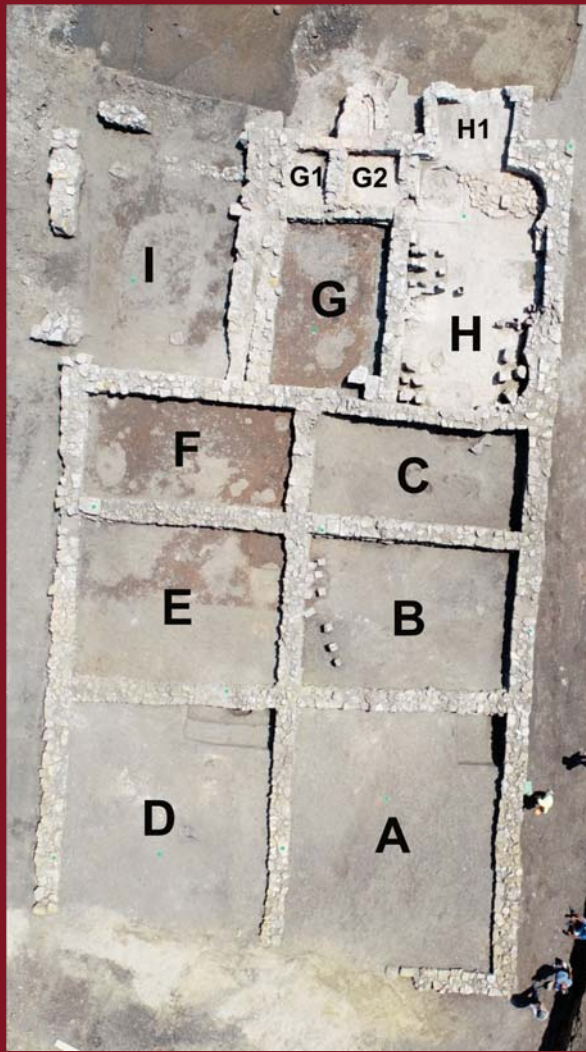


Fig. 4. ???.



Fig. 5. ???.



Relevé terme: B - S



Relevé terme: C - N



Relevé terme: F - V



Relevé terme: G1 - S

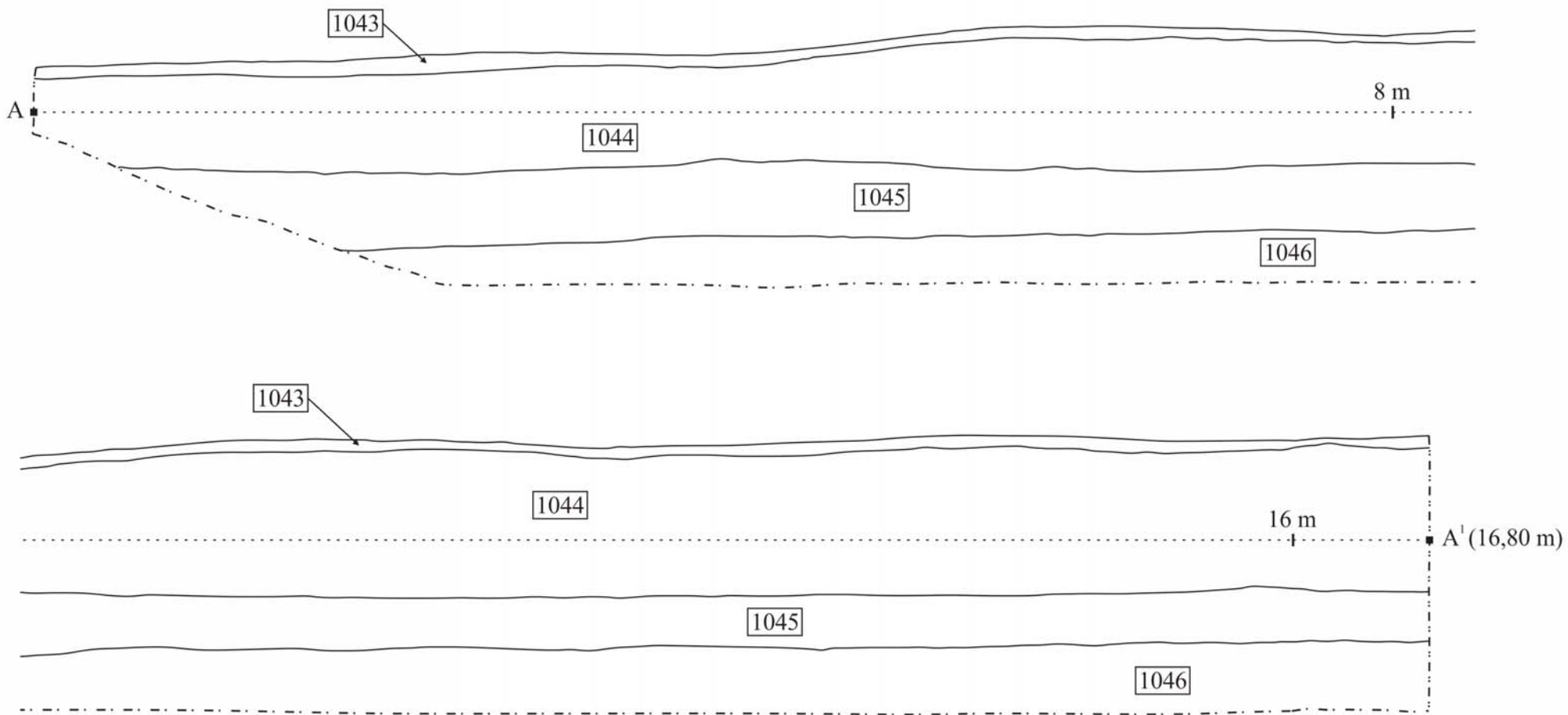


Relevé terme: H1 - V



Relevé terme: praefurnium exterior

Fig. 6. ???.



Sutor 2021; S02 - Civilian Baths stratigraphy

- 1043 – Topsoil
- 1044 – Alluvial level
- 1045 – Sandy clay level
- 1046 – Dark soil with pottery pigments (Roman level)

Fig. 7. ???.



Fig. 8. ???.

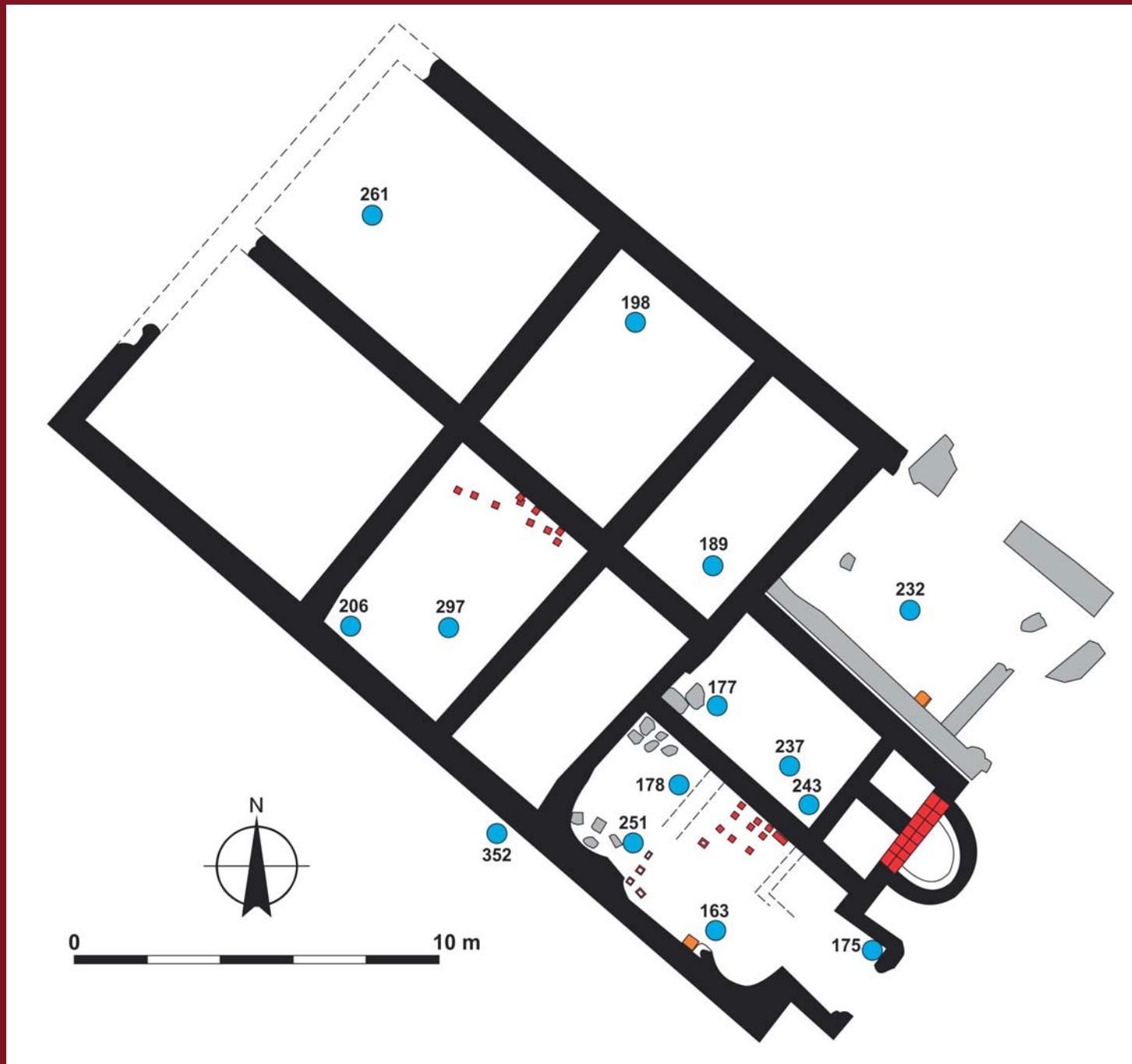


Fig. 9. The civilian baths from Sutor. Coin distribution by rooms.